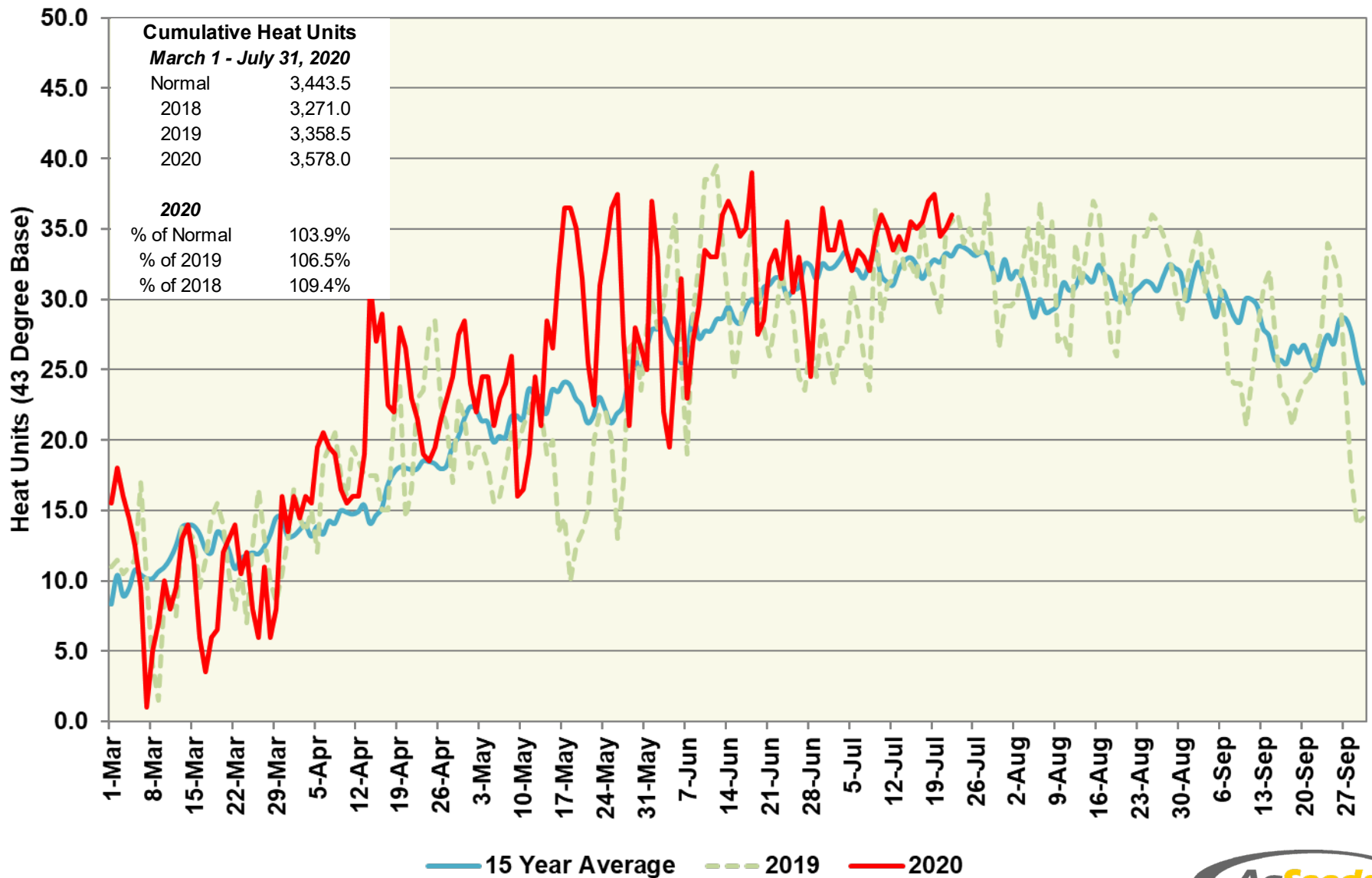


Patterson Station (Central Region)

Heat Units – 2020 vs 2019 & 15 Year Average



Patterson Station (Central Region)

Heat Units – 2020 vs 2019 & 15 Year Average

| Period | 2020 Semi-Monthly | | | | 2019 Semi-Monthly | | | | 15 Year Average | | | |
|----------------|----------------------|---------|------------|-----------------------|----------------------|---------|------------|-----------------------|-----------------|---------|------------|-----------------------|
| | Avg Max | Avg Min | Heat Units | Cumulative Heat Units | Avg Max | Avg Min | Heat Units | Cumulative Heat Units | Avg Max | Avg Min | Heat Units | Cumulative Heat Units |
| March 1 - 15 | 68.7 | 41.9 | 185.0 | 185.0 | 64.7 | 41.8 | 154.0 | 154.0 | 66.6 | 40.9 | 166.0 | 166.0 |
| March 16 - 31 | 62.8 | 40.8 | 140.0 | 325.0 | 68.4 | 40.8 | 185.5 | 339.5 | 68.9 | 41.8 | 202.1 | 368.1 |
| April 1 - 15 | 68.3 | 43.4 | 193.0 | 518.0 | 71.7 | 48.2 | 254.0 | 593.5 | 70.6 | 42.8 | 213.0 | 581.1 |
| April 16 - 30 | 79.6 | 50.5 | 330.5 | 848.5 | 80.1 | 47.9 | 314.5 | 908.0 | 76.4 | 44.9 | 274.0 | 855.1 |
| May 1 - 15 | 83.1 | 48.6 | 342.5 | 1,191.0 | 77.5 | 47.5 | 292.0 | 1,200.0 | 80.8 | 47.4 | 327.6 | 1,182.7 |
| May 16 - 31 | 85.4 | 53.3 | 421.5 | 1,612.5 | 73.8 | 49.4 | 298.0 | 1,498.0 | 82.1 | 49.2 | 371.7 | 1,554.4 |
| June 1 - 15 | 88.9 | 55.1 | 435.0 | 2,047.5 | 90.6 | 57.7 | 467.5 | 1,965.5 | 87.8 | 51.9 | 417.4 | 1,971.8 |
| June 16 - 30 | 94.1 | 56.5 | 485.0 | 2,532.5 | 88.1 | 54.9 | 428.0 | 2,393.5 | 92.3 | 53.8 | 462.7 | 2,434.5 |
| July 1 - 15 | 95.4 | 55.6 | 487.5 | 3,020.0 | 90.1 | 54.4 | 439.0 | 2,832.5 | 93.5 | 55.3 | 484.2 | 2,918.8 |
| July 16 - 31 | 96.2 | 59.6 | 558.0 | 3,578.0 | 93.1 | 58.7 | 526.0 | 3,358.5 | 93.6 | 57.3 | 524.8 | 3,443.5 |
| August 1 - 15 | | | | | 92.2 | 57.5 | 478.0 | 3,836.5 | 91.3 | 54.3 | 458.9 | 3,902.4 |
| August 16 - 31 | | | | | 92.4 | 58.0 | 515.0 | 4,351.5 | 92.0 | 54.5 | 497.8 | 4,400.2 |
| Sept 1 -15 | | | | | 88.5 | 54.9 | 430.0 | 4,781.5 | 90.0 | 53.3 | 442.1 | 4,842.3 |
| Sept 16 - 30 | | | | | 81.5 | 52.7 | 361.5 | 5,143.0 | 86.7 | 50.0 | 396.5 | 5,238.9 |