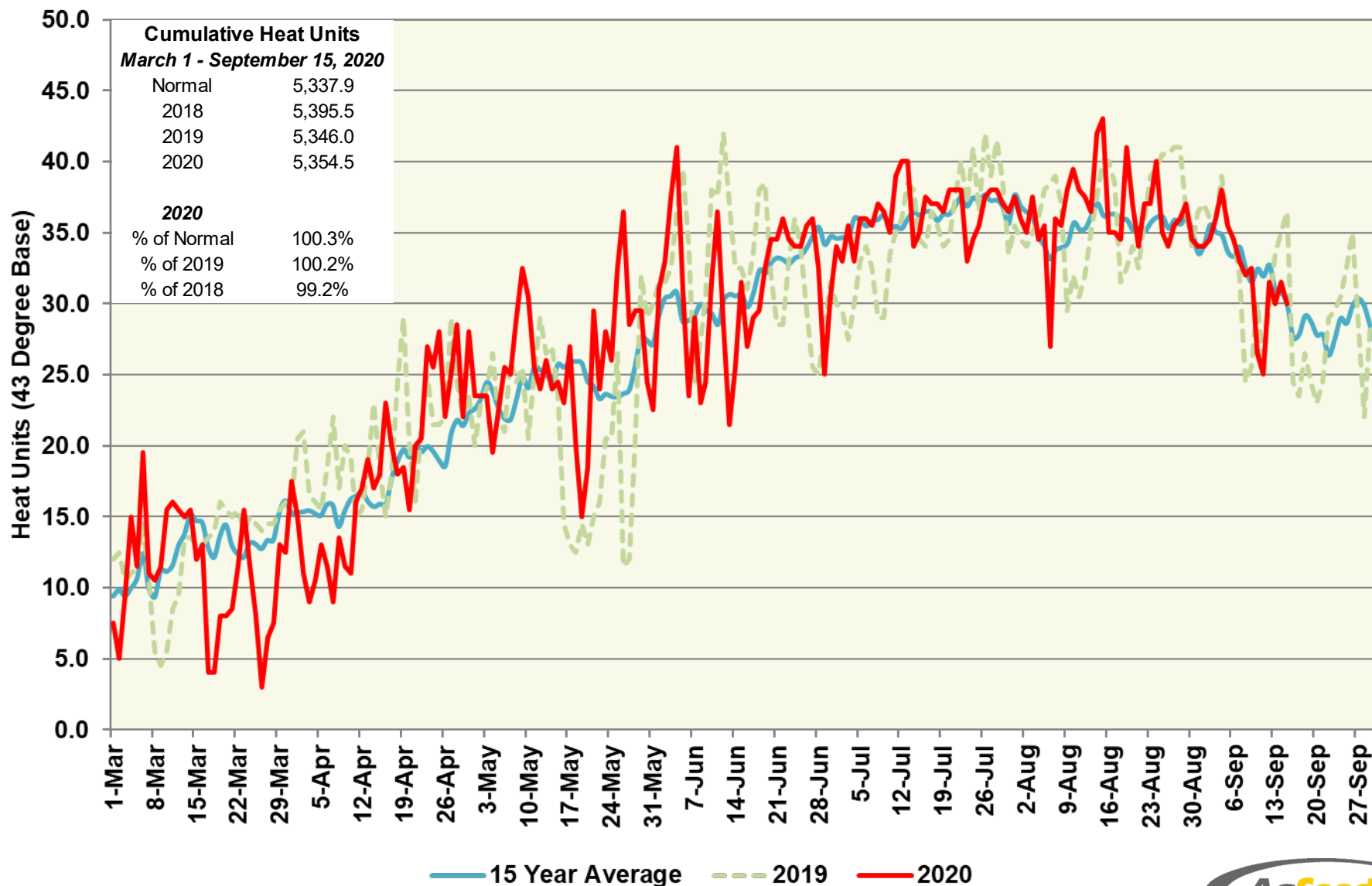


Five Points Station (South Region)

Heat Units – 2020 vs 2019 & 15 Year Average



Five Points Station (South Region)

Heat Units – 2020 vs 2019 & 15 Year Average

Period	2020 Semi-Monthly				2019 Semi-Monthly				15 Year Average			
	Avg Max	Avg Min	Heat Units	Cumulative Heat Units	Avg Max	Avg Min	Heat Units	Cumulative Heat Units	Avg Max	Avg Min	Heat Units	Cumulative Heat Units
March 1 - 15	68.5	42.9	190.5	190.5	64.9	41.9	156.0	156.0	67.9	40.9	171.4	171.4
March 16 - 31	63.1	41.9	152.0	342.5	70.7	44.9	236.5	392.5	70.2	43.0	217.4	388.8
April 1 - 15	68.9	44.0	202.0	544.5	74.7	48.2	276.5	669.0	72.6	44.7	234.7	623.5
April 16 - 30	79.9	51.7	341.5	886.0	81.1	49.3	333.0	1,002.0	78.0	47.2	294.4	917.9
May 1 - 15	84.9	51.7	379.0	1,265.0	81.1	53.5	364.0	1,366.0	83.1	50.8	358.9	1,276.8
May 16 - 31	84.3	53.6	414.5	1,679.5	73.4	50.3	301.0	1,667.0	83.2	52.9	401.1	1,677.9
June 1 - 15	88.6	57.2	448.5	2,128.0	93.0	60.7	507.5	2,174.5	89.0	56.6	447.0	2,124.9
June 16 - 30	92.5	58.1	485.0	2,613.0	90.3	58.7	472.5	2,647.0	93.4	58.8	496.8	2,621.7
July 1 - 15	96.3	61.6	539.5	3,152.5	93.2	58.1	490.0	3,137.0	95.8	61.4	534.1	3,155.8
July 16 - 31	96.1	63.6	589.5	3,742.0	97.2	63.4	596.5	3,733.5	96.8	62.9	589.8	3,745.6
August 1 - 15	96.7	62.8	551.5	4,293.5	95.1	61.4	528.5	4,262.0	95.5	61.1	529.3	4,275.0
August 16 - 31	94.9	63.1	576.5	4,870.0	96.4	63.8	593.5	4,855.5	95.7	61.5	569.6	4,844.5
Sept 1 - 15	90.8	59.8	484.5	5,354.5	92.3	59.1	490.5	5,346.0	92.8	59.0	493.4	5,337.9
Sept 16 - 30					85.8	54.9	410.0	5,756.0	88.2	54.6	425.9	5,763.8