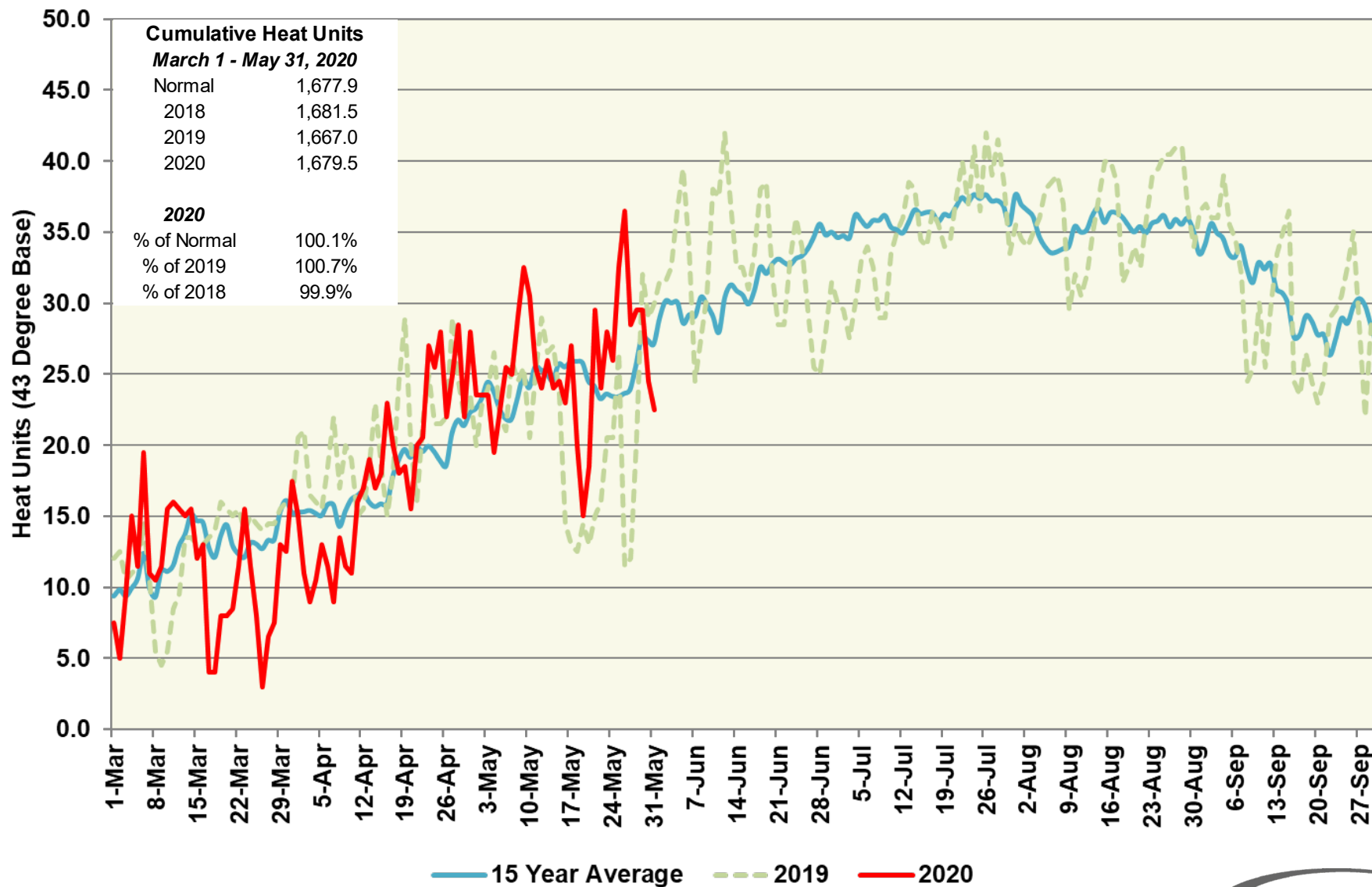


# Five Points Station (South Region)

## Heat Units – 2020 vs 2019 & 15 Year Average



# Five Points Station (South Region)

## Heat Units – 2020 vs 2019 & 15 Year Average

| Period         | 2020<br>Semi-Monthly |         |            |                       | 2019<br>Semi-Monthly |         |            |                       | 15 Year Average |         |            |                       |
|----------------|----------------------|---------|------------|-----------------------|----------------------|---------|------------|-----------------------|-----------------|---------|------------|-----------------------|
|                | Avg Max              | Avg Min | Heat Units | Cumulative Heat Units | Avg Max              | Avg Min | Heat Units | Cumulative Heat Units | Avg Max         | Avg Min | Heat Units | Cumulative Heat Units |
| March 1 - 15   | 68.5                 | 42.9    | 190.5      | 190.5                 | 64.9                 | 41.9    | 156.0      | 156.0                 | 67.9            | 40.9    | 171.4      | 171.4                 |
| March 16 - 31  | 63.1                 | 41.9    | 152.0      | 342.5                 | 70.7                 | 44.9    | 236.5      | 392.5                 | 70.2            | 43.0    | 217.4      | 388.8                 |
| April 1 - 15   | 68.9                 | 44.0    | 202.0      | 544.5                 | 74.7                 | 48.2    | 276.5      | 669.0                 | 72.6            | 44.7    | 234.7      | 623.5                 |
| April 16 - 30  | 79.9                 | 51.7    | 341.5      | 886.0                 | 81.1                 | 49.3    | 333.0      | 1,002.0               | 78.0            | 47.2    | 294.4      | 917.9                 |
| May 1 - 15     | 84.9                 | 51.7    | 379.0      | 1,265.0               | 81.1                 | 53.5    | 364.0      | 1,366.0               | 83.1            | 50.8    | 358.9      | 1,276.8               |
| May 16 - 31    | 84.3                 | 53.6    | 414.5      | 1,679.5               | 73.4                 | 50.3    | 301.0      | 1,667.0               | 83.2            | 52.9    | 401.1      | 1,677.9               |
| June 1 - 15    |                      |         |            |                       | 93.0                 | 60.7    | 507.5      | 2,174.5               | 89.1            | 56.5    | 446.9      | 2,124.8               |
| June 16 - 30   |                      |         |            |                       | 90.3                 | 58.7    | 472.5      | 2,647.0               | 93.5            | 58.9    | 497.6      | 2,622.5               |
| July 1 - 15    |                      |         |            |                       | 93.2                 | 58.1    | 490.0      | 3,137.0               | 95.8            | 61.4    | 533.7      | 3,156.2               |
| July 16 - 31   |                      |         |            |                       | 97.2                 | 63.4    | 596.5      | 3,733.5               | 96.8            | 62.9    | 589.8      | 3,746.0               |
| August 1 - 15  |                      |         |            |                       | 95.1                 | 61.4    | 528.5      | 4,262.0               | 95.4            | 60.9    | 527.8      | 4,273.8               |
| August 16 - 31 |                      |         |            |                       | 96.4                 | 63.8    | 593.5      | 4,855.5               | 95.7            | 61.4    | 569.1      | 4,842.8               |
| Sept 1 - 15    |                      |         |            |                       | 92.3                 | 59.1    | 490.5      | 5,346.0               | 92.9            | 58.9    | 494.0      | 5,336.9               |
| Sept 16 - 30   |                      |         |            |                       | 85.8                 | 54.9    | 410.0      | 5,756.0               | 88.2            | 54.6    | 425.9      | 5,762.7               |