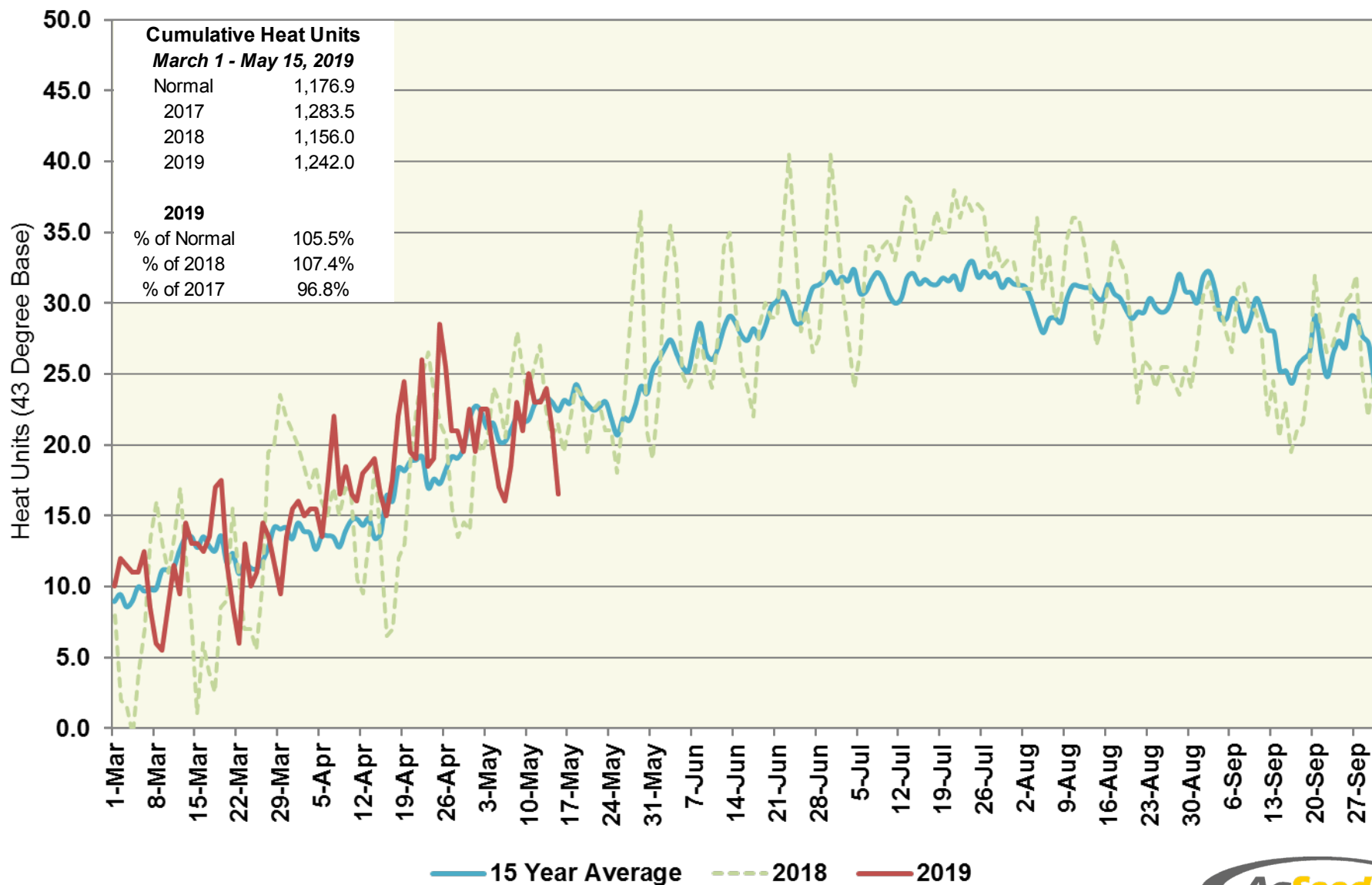


Woodland Station (North Region)

Heat Units – 2019 vs 2018 & 15 Year Average



Woodland Station (North Region)

Heat Units – 2019 vs 2018 & 15 Year Average

| Period | 2019 Semi-Monthly | | | | 2018 Semi-Monthly | | | | 15 Year Average | | | |
|----------------|----------------------|------------|---------------|--------------------------|----------------------|------------|---------------|--------------------------|-----------------|------------|---------------|--------------------------|
| | Avg Max | Avg Min | Heat Units | Cumulative Heat Units | Avg Max | Avg Min | Heat Units | Cumulative Heat Units | Avg Max | Avg Min | Heat Units | Cumulative Heat Units |
| March 1 - 15 | 62.4 | 44.7 | 158.0 | 158.0 | 61.9 | 41.1 | 127.5 | 127.5 | 64.9 | 42.6 | 161.5 | 161.5 |
| March 16 - 31 | 67.1 | 43.7 | 198.5 | 356.5 | 67.0 | 43.0 | 192.0 | 319.5 | 67.3 | 44.0 | 202.2 | 363.7 |
| April 1 - 15 | 70.1 | 49.8 | 254.5 | 611.0 | 70.4 | 47.0 | 235.5 | 555.0 | 69.2 | 44.6 | 207.9 | 571.6 |
| April 16 - 30 | 79.2 | 49.3 | 319.0 | 930.0 | 74.0 | 45.9 | 254.5 | 809.5 | 75.5 | 47.3 | 275.9 | 847.5 |
| May 1 - 15 | 78.4 | 49.2 | 312.0 | 1,242.0 | 81.1 | 51.1 | 346.5 | 1,156.0 | 79.7 | 50.2 | 329.4 | 1,176.9 |
| May 16 - 31 | | | | | 79.6 | 52.9 | 372.0 | 1,528.0 | 80.6 | 51.2 | 366.5 | 1,543.4 |
| June 1 - 15 | | | | | 88.1 | 54.7 | 425.5 | 1,953.5 | 85.4 | 54.7 | 405.9 | 1,949.2 |
| June 16 - 30 | | | | | 90.2 | 56.9 | 458.0 | 2,411.5 | 89.5 | 55.9 | 445.1 | 2,394.3 |
| July 1 - 15 | | | | | 92.0 | 59.3 | 490.0 | 2,901.5 | 91.5 | 57.1 | 469.9 | 2,864.2 |
| July 16 - 31 | | | | | 96.5 | 59.8 | 562.0 | 3,463.5 | 92.3 | 57.2 | 507.6 | 3,371.8 |
| August 1 - 15 | | | | | 92.4 | 57.5 | 479.5 | 3,943.0 | 90.6 | 55.6 | 451.1 | 3,822.9 |
| August 16 - 31 | | | | | 85.8 | 54.3 | 432.5 | 4,375.5 | 90.8 | 55.5 | 482.4 | 4,305.3 |
| Sept 1 - 15 | | | | | 88.1 | 53.2 | 415.0 | 4,790.5 | 89.3 | 54.7 | 435.5 | 4,740.9 |
| Sept 16 - 30 | | | | | 87.3 | 51.3 | 394.0 | 5,184.5 | 86.3 | 53.1 | 400.1 | 5,141.0 |