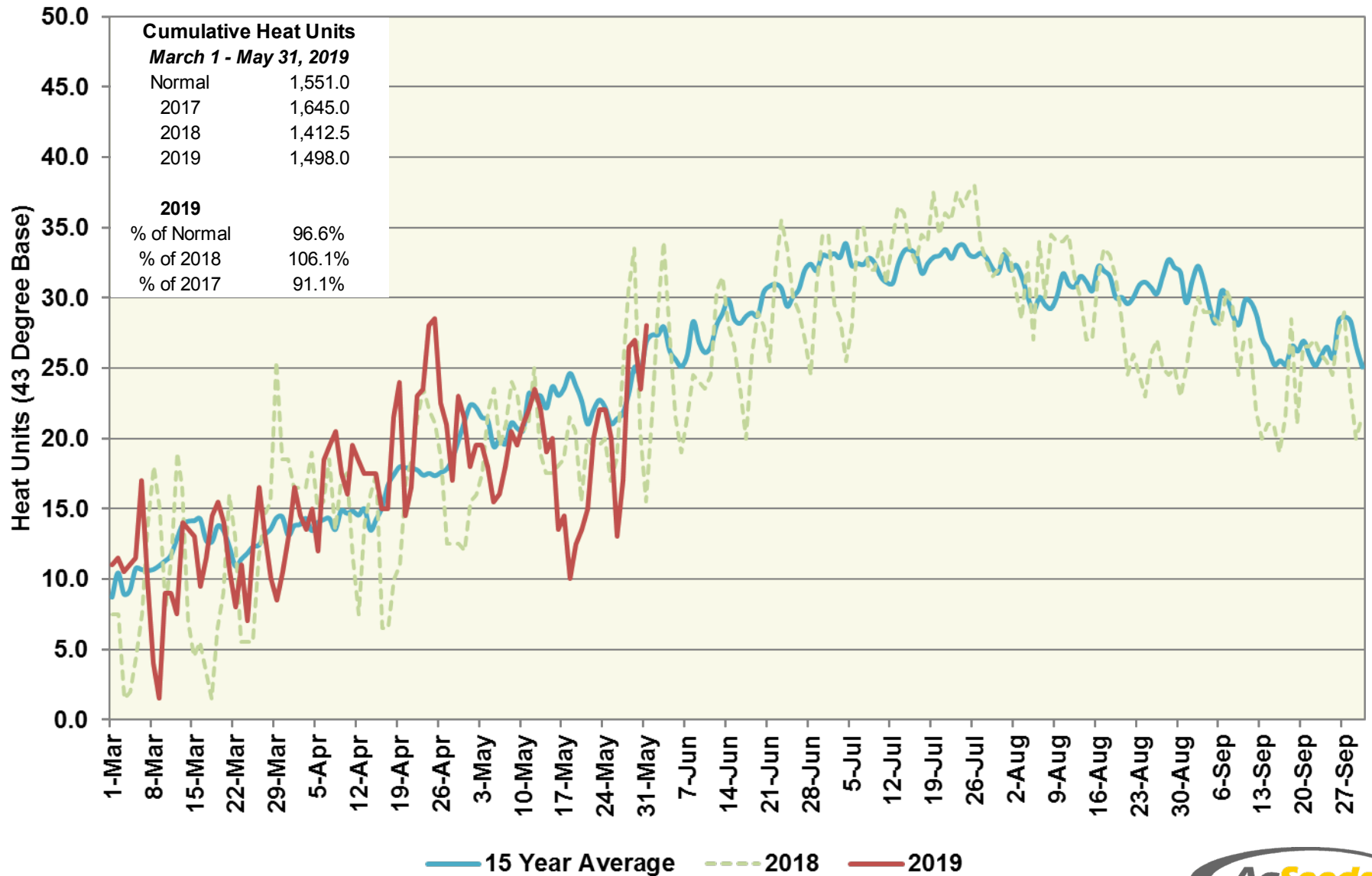


Patterson Station (Central Region)

Heat Units – 2019 vs 2018 & 15 Year Average



Patterson Station (Central Region)

Heat Units – 2019 vs 2018 & 15 Year Average

Period	2019 Semi-Monthly				2018 Semi-Monthly				15 Year Average			
	Avg Max	Avg Min	Heat Units	Cumulative Heat Units	Avg Max	Avg Min	Heat Units	Cumulative Heat Units	Avg Max	Avg Min	Heat Units	Cumulative Heat Units
March 1 - 15	64.7	41.8	154.0	154.0	64.4	40.8	144.0	144.0	66.6	41.0	169.2	169.2
March 16 - 31	68.4	40.8	185.5	339.5	67.4	40.6	175.5	319.5	69.1	41.8	206.9	376.1
April 1 - 15	71.7	48.2	254.0	593.5	71.7	45.2	232.0	551.5	70.5	42.8	213.4	589.4
April 16 - 30	80.1	47.9	314.5	908.0	72.6	43.5	225.5	777.0	75.9	44.6	268.2	857.7
May 1 - 15	77.5	47.5	292.0	1,200.0	79.0	47.3	302.5	1,079.5	80.4	47.6	323.8	1,181.4
May 16 - 31	73.8	49.4	298.0	1,498.0	78.3	49.4	333.0	1,412.5	82.0	49.2	369.6	1,551.0
June 1 - 15					86.5	51.1	387.0	1,799.5	87.3	51.6	408.6	1,959.6
June 16 - 30					89.5	53.7	429.0	2,228.5	92.0	53.7	456.7	2,416.3
July 1 - 15					92.2	58.5	485.0	2,713.5	93.8	55.8	487.9	2,904.2
July 16 - 31					95.8	59.9	557.5	3,271.0	93.9	57.4	525.6	3,429.8
August 1 - 15					92.5	55.9	468.0	3,739.0	91.6	54.6	460.4	3,890.2
August 16 - 31					85.6	54.3	431.5	4,170.5	92.2	54.6	496.1	4,386.3
Sept 1 - 15					87.1	51.6	395.0	4,565.5	89.9	53.6	436.1	4,822.4
Sept 16 - 30					85.9	49.1	367.5	4,933.0	87.1	50.2	396.6	5,219.0