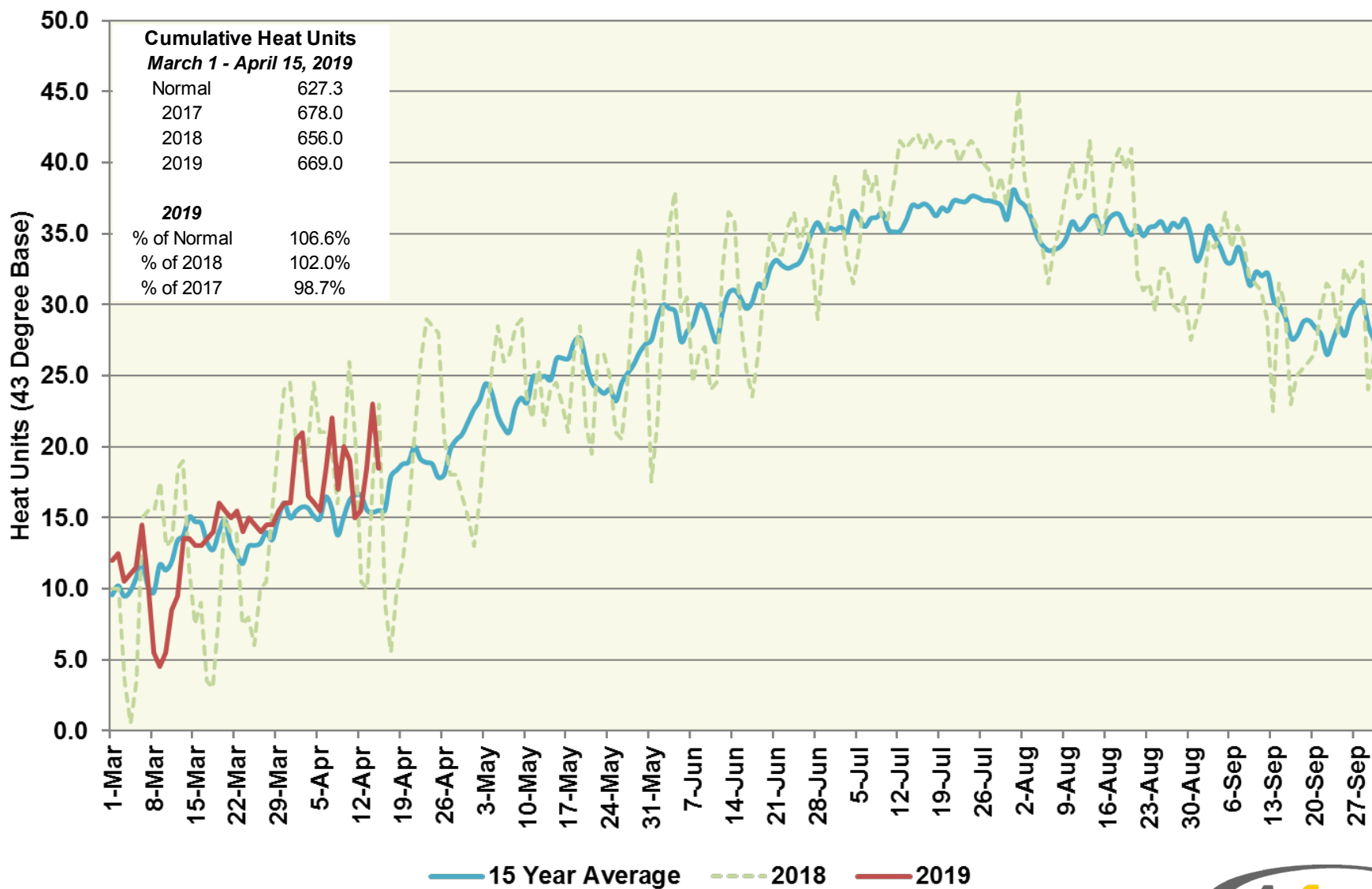


Five Points Station (South Region)

Heat Units – 2019 vs 2018 & 15 Year Average



Five Points Station (South Region)

Heat Units – 2019 vs 2018 & 15 Year Average

| Period | 2019 Semi-Monthly | | | | 2018 Semi-Monthly | | | | 15 Year Average | | | |
|----------------|----------------------|---------|------------|-----------------------|----------------------|---------|------------|-----------------------|-----------------|---------|------------|-----------------------|
| | Avg Max | Avg Min | Heat Units | Cumulative Heat Units | Avg Max | Avg Min | Heat Units | Cumulative Heat Units | Avg Max | Avg Min | Heat Units | Cumulative Heat Units |
| March 1 - 15 | 64.9 | 41.9 | 156.0 | 156.0 | 66.3 | 42.9 | 174.0 | 174.0 | 68.1 | 41.1 | 173.8 | 173.8 |
| March 16 - 31 | 70.7 | 44.9 | 236.5 | 392.5 | 68.1 | 41.9 | 192.5 | 366.5 | 70.4 | 43.0 | 219.7 | 393.5 |
| April 1 - 15 | 74.7 | 48.2 | 276.5 | 669.0 | 76.1 | 48.5 | 289.5 | 656.0 | 72.7 | 44.5 | 233.8 | 627.3 |
| April 16 - 30 | | | | | 76.6 | 45.7 | 272.5 | 928.5 | 77.3 | 46.7 | 285.0 | 912.3 |
| May 1 - 15 | | | | | 82.9 | 50.7 | 356.5 | 1,285.0 | 82.6 | 50.5 | 353.8 | 1,266.1 |
| May 16 - 31 | | | | | 82.2 | 53.4 | 396.5 | 1,681.5 | 84.1 | 53.1 | 409.6 | 1,675.7 |
| June 1 - 15 | | | | | 90.3 | 55.1 | 445.5 | 2,127.0 | 88.5 | 56.1 | 439.5 | 2,115.2 |
| June 16 - 30 | | | | | 92.4 | 58.1 | 483.5 | 2,610.5 | 93.2 | 58.7 | 494.2 | 2,609.4 |
| July 1 - 15 | | | | | 97.3 | 64.3 | 567.0 | 3,177.5 | 96.0 | 61.7 | 537.6 | 3,147.0 |
| July 16 - 31 | | | | | 100.1 | 66.5 | 645.0 | 3,822.5 | 97.0 | 63.1 | 593.0 | 3,740.1 |
| August 1 - 15 | | | | | 97.7 | 62.5 | 557.0 | 4,379.5 | 95.5 | 61.2 | 529.6 | 4,269.6 |
| August 16 - 31 | | | | | 92.4 | 60.4 | 534.0 | 4,913.5 | 95.5 | 61.2 | 566.0 | 4,835.7 |
| Sept 1 - 15 | | | | | 92.6 | 57.7 | 482.0 | 5,395.5 | 92.5 | 58.6 | 488.0 | 5,323.7 |
| Sept 16 - 30 | | | | | 89.1 | 53.7 | 426.0 | 5,821.5 | 88.1 | 54.6 | 425.0 | 5,748.7 |