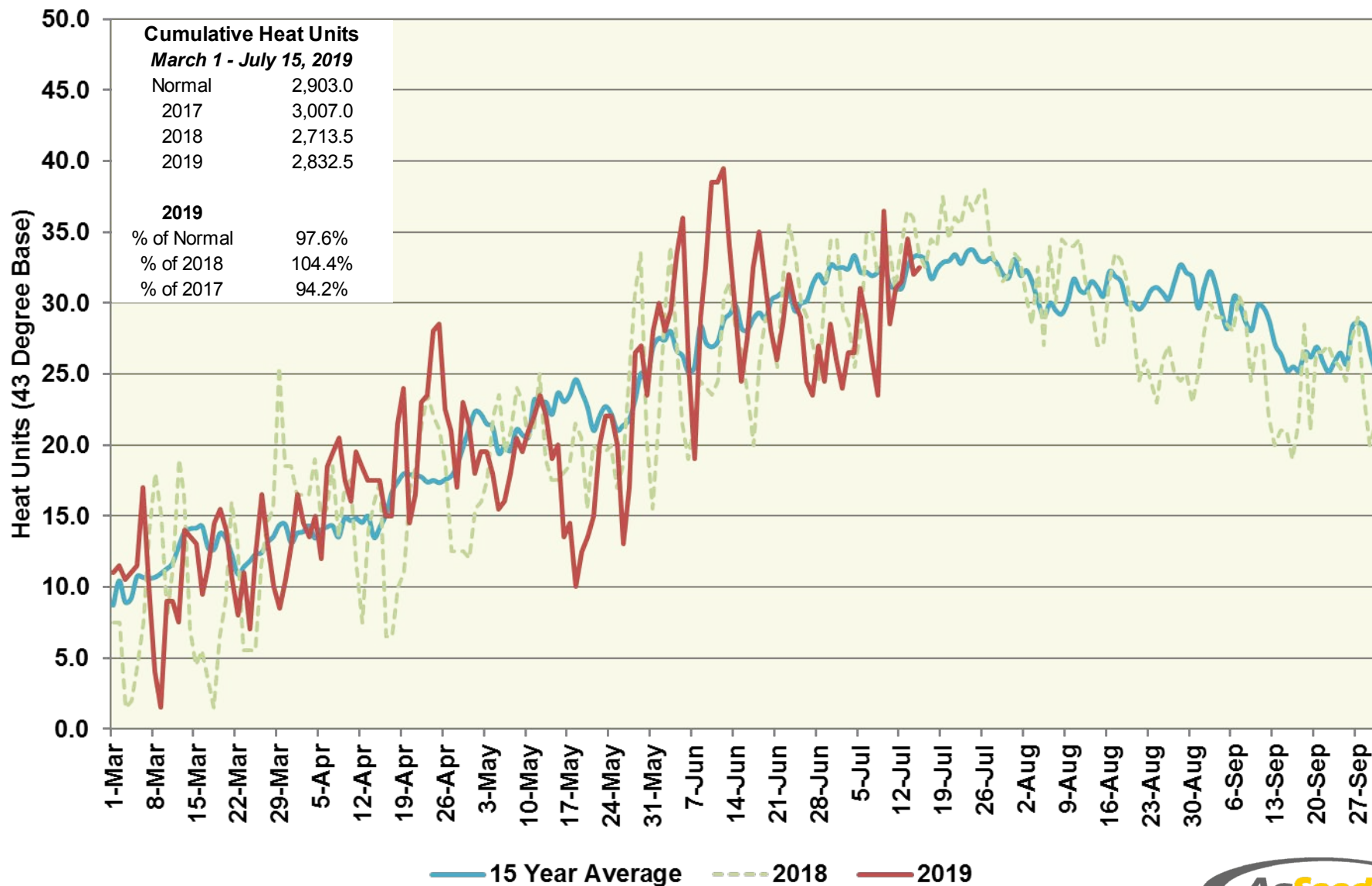


Patterson Station (Central Region)

Heat Units – 2019 vs 2018 & 15 Year Average



Patterson Station (Central Region)

Heat Units – 2019 vs 2018 & 15 Year Average

| Period | 2019 Semi-Monthly | | | | 2018 Semi-Monthly | | | | 15 Year Average | | | |
|----------------|----------------------|---------|------------|-----------------------|----------------------|---------|------------|-----------------------|-----------------|---------|------------|-----------------------|
| | Avg Max | Avg Min | Heat Units | Cumulative Heat Units | Avg Max | Avg Min | Heat Units | Cumulative Heat Units | Avg Max | Avg Min | Heat Units | Cumulative Heat Units |
| March 1 - 15 | 64.7 | 41.8 | 154.0 | 154.0 | 64.4 | 40.8 | 144.0 | 144.0 | 66.6 | 41.0 | 169.2 | 169.2 |
| March 16 - 31 | 68.4 | 40.8 | 185.5 | 339.5 | 67.4 | 40.6 | 175.5 | 319.5 | 69.1 | 41.8 | 206.9 | 376.1 |
| April 1 - 15 | 71.7 | 48.2 | 254.0 | 593.5 | 71.7 | 45.2 | 232.0 | 551.5 | 70.5 | 42.8 | 213.4 | 589.4 |
| April 16 - 30 | 80.1 | 47.9 | 314.5 | 908.0 | 72.6 | 43.5 | 225.5 | 777.0 | 75.9 | 44.6 | 268.2 | 857.7 |
| May 1 - 15 | 77.5 | 47.5 | 292.0 | 1,200.0 | 79.0 | 47.3 | 302.5 | 1,079.5 | 80.4 | 47.6 | 323.8 | 1,181.4 |
| May 16 - 31 | 73.8 | 49.4 | 298.0 | 1,498.0 | 78.3 | 49.4 | 333.0 | 1,412.5 | 82.0 | 49.2 | 369.6 | 1,551.0 |
| June 1 - 15 | 90.6 | 57.7 | 467.5 | 1,965.5 | 86.5 | 51.1 | 387.0 | 1,799.5 | 87.5 | 52.0 | 412.5 | 1,963.5 |
| June 16 - 30 | 88.1 | 54.9 | 428.0 | 2,393.5 | 89.5 | 53.7 | 429.0 | 2,228.5 | 91.7 | 53.8 | 454.8 | 2,418.3 |
| July 1 - 15 | 90.1 | 54.4 | 439.0 | 2,832.5 | 92.2 | 58.5 | 485.0 | 2,713.5 | 93.5 | 55.7 | 484.6 | 2,903.0 |
| July 16 - 31 | | | | | 95.8 | 59.9 | 557.5 | 3,271.0 | 93.9 | 57.4 | 525.6 | 3,428.6 |
| August 1 - 15 | | | | | 92.5 | 55.9 | 468.0 | 3,739.0 | 91.6 | 54.6 | 460.4 | 3,888.9 |
| August 16 - 31 | | | | | 85.6 | 54.3 | 431.5 | 4,170.5 | 92.2 | 54.6 | 496.1 | 4,385.0 |
| Sept 1 - 15 | | | | | 87.1 | 51.6 | 395.0 | 4,565.5 | 89.9 | 53.6 | 436.1 | 4,821.1 |
| Sept 16 - 30 | | | | | 85.9 | 49.1 | 367.5 | 4,933.0 | 87.1 | 50.2 | 396.6 | 5,217.8 |