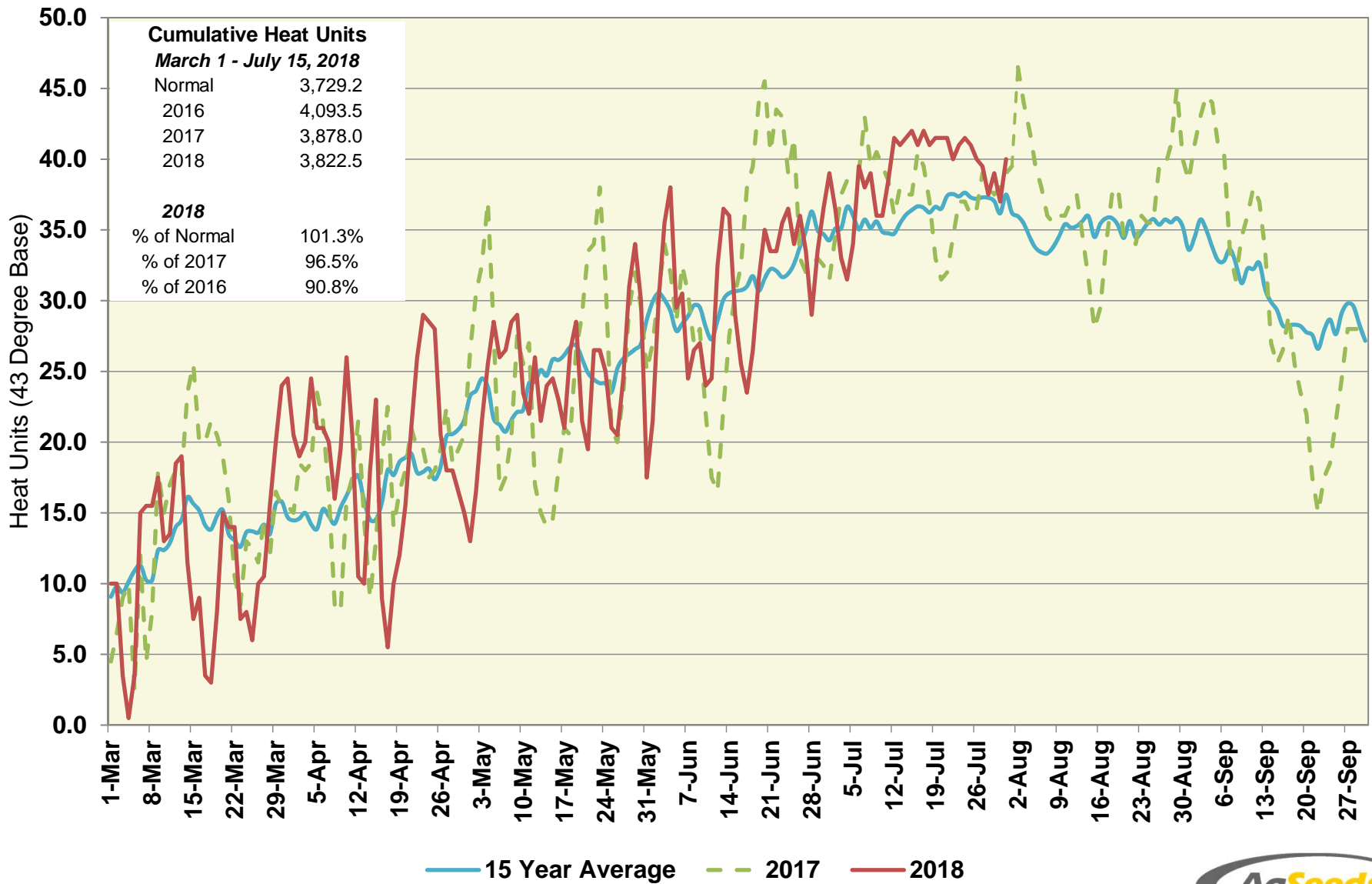


Five Points Station (South Region)

Heat Units – 2018 vs 2017 & 15 Year Average



Five Points Station (South Region)

Heat Units – 2018 vs 2017 & 15 Year Average

| Period | 2018 Semi- Monthly | | | | 2017 Semi- Monthly | | | | 15 Year Average Semi- Monthly | | | |
|---------------|--------------------------|------------|---------------|--------------------------|--------------------------|------------|---------------|--------------------------|-------------------------------------|------------|---------------|--------------------------|
| | Avg Max | Avg Min | Heat Units | Cumulative Heat Units | Avg Max | Avg Min | Heat Units | Cumulative Heat Units | Avg Max | Avg Min | Heat Units | Cumulative Heat Units |
| March 1 - 15 | 66.3 | 42.9 | 174.0 | 174.0 | 70.7 | 40.9 | 191.5 | 191.5 | 68.6 | 41.2 | 178.9 | 178.9 |
| March 16 - 31 | 68.1 | 41.9 | 192.5 | 366.5 | 70.4 | 46.4 | 247.0 | 438.5 | 71.1 | 43.3 | 227.0 | 405.9 |
| April 1 - 15 | 76.1 | 48.5 | 289.5 | 656.0 | 72.5 | 45.4 | 239.5 | 678.0 | 72.3 | 44.1 | 227.6 | 633.5 |
| April 16 - 30 | 76.6 | 45.7 | 272.5 | 928.5 | 75.9 | 48.2 | 286.0 | 964.0 | 76.9 | 46.6 | 281.1 | 914.6 |
| May 1 - 15 | 82.9 | 50.7 | 356.5 | 1,285.0 | 80.7 | 51.9 | 349.5 | 1,313.5 | 82.1 | 50.5 | 349.0 | 1,263.6 |
| May 16 - 31 | 82.2 | 53.4 | 396.5 | 1,681.5 | 86.1 | 53.9 | 432.5 | 1,746.0 | 84.3 | 53.2 | 412.1 | 1,675.7 |
| June 1 - 15 | 90.3 | 55.1 | 445.5 | 2,127.0 | 86.3 | 53.9 | 406.5 | 2,152.5 | 88.5 | 56.1 | 439.4 | 2,115.0 |
| June 16 - 30 | 92.4 | 58.1 | 483.5 | 2,610.5 | 97.9 | 64.1 | 570.0 | 2,722.5 | 92.9 | 58.5 | 490.9 | 2,605.9 |
| July 1 - 15 | 97.3 | 64.3 | 567.0 | 3,177.5 | 98.3 | 63.6 | 569.5 | 3,292.0 | 95.6 | 61.2 | 530.9 | 3,136.9 |
| July 16 - 31 | 100.1 | 66.5 | 645.0 | 3,822.5 | 97.4 | 61.8 | 586.0 | 3,878.0 | 96.8 | 63.2 | 592.3 | 3,729.2 |