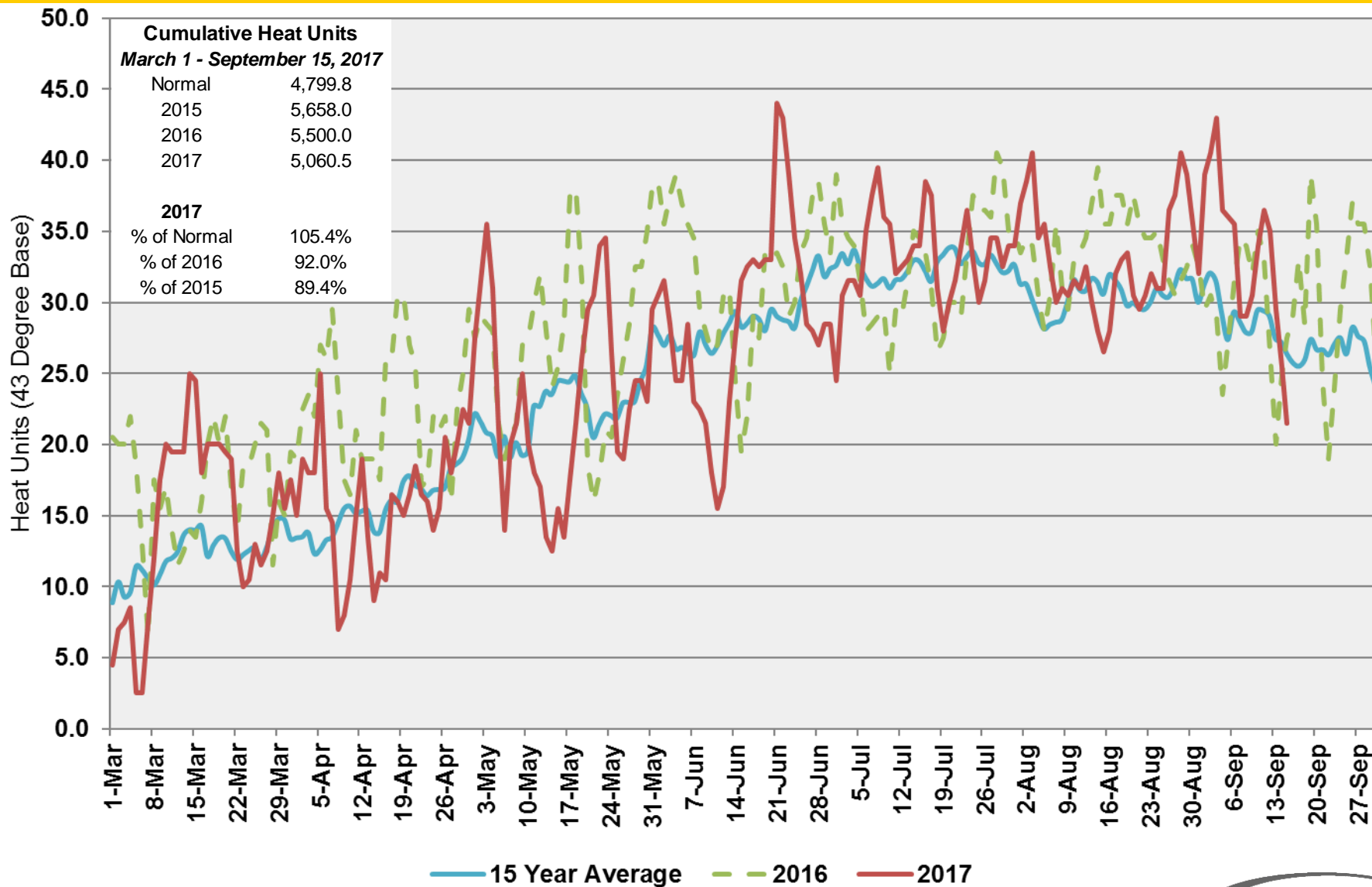


Patterson Station (Central Region)

Heat Units – 2017 vs 2016 & 15 Year Average



Patterson Station (Central Region)

Heat Units – 2017 vs 2016 & 15 Year Average

Period	2017 Semi- Monthly				2016 Semi- Monthly				15 Year Average Semi- Monthly			
	Avg Max	Avg Min	Heat Units	Cumulative Heat Units	Avg Max	Avg Min	Heat Units	Cumulative Heat Units	Avg Max	Avg Min	Heat Units	Cumulative Heat Units
March 1 - 15	40.9	42.1	197.5	197.5	67.2	50.3	236.0	236.0	67.2	41.6	170.5	170.5
March 16 - 31	43.1	47.9	252.5	450.0	73.9	48.6	292.5	528.5	69.9	42.4	210.2	380.7
April 1 - 15	69.8	45.3	218.0	668.0	76.7	52.3	322.5	851.0	71.2	43.1	212.0	592.7
April 16 - 30	71.3	49.0	257.5	925.5	80.4	53.3	358.0	1,209.0	75.7	45.0	260.3	853.0
May 1 - 15	78.4	50.7	323.5	1,249.0	81.5	56.5	389.5	1,598.5	81.0	47.8	320.3	1,173.3
May 16 - 31	84.1	51.4	396.0	1,645.0	86.5	55.2	445.5	2,044.0	83.5	49.4	375.4	1,548.7
June 1 - 15	83.2	51.8	367.5	2,012.5	91.1	58.1	474.0	2,518.0	88.3	52.5	411.4	1,960.1
June 16 - 30	93.3	59.0	497.0	2,509.5	93.3	57.1	483.0	3,001.0	92.2	53.8	449.9	2,410.0
July 1 - 15	94.9	57.5	497.5	3,007.0	92.4	56.8	474.0	3,475.0	94.4	56.1	483.5	2,893.5
July 16 - 31	94.9	57.5	531.0	3,538.0	95.1	58.1	537.5	4,012.5	94.4	57.4	526.0	3,419.5
August 1 - 15	91.8	59.5	489.5	4,027.5	95.5	57.2	500.0	4,512.5	91.9	54.5	453.3	3,872.8
August 16 - 31	96.1	56.4	532.0	4,559.5	95.4	59.1	548.5	5,061.0	92.6	55.0	492.4	4,365.3
Sept 1 -15	90.9	61.9	501.0	5,060.5	91.6	52.9	439.0	5,500.0	90.8	53.2	434.5	4,799.8